



TEKIRO CORPORATION



KATALOG PRODUK

UNIT - GASOLINE PARTS - DIESEL PARTS

www.ryuengine.com

DAFTAR ISI

| | |
|---|-----------|
| GASOLINE GENERATOR SET | 4 |
| GASOLINE ENGINE | 13 |
| GASOLINE WATER PUMP | 22 |
| BRUSH CUTTER | 27 |
| CHAINSAW | 28 |
| POWER SPRAYER | 29 |
| SUBMERSIBLE PUMP | 30 |
| GASOLINE PARTS | 34 |
| DIESEL PARTS | 45 |
| BEARING | 54 |
| APLIKASI PENGGUNAAN BEARING PADA MESIN | 56 |



**GASOLINE
GENERATOR SET**

GREEN 8800 GASOLINE GENERATOR SET

MESIN PEMBANGKIT LISTRIK BERBAHAN BAKAR BENSLIN



SPESIFIKASI

Daya Output : 6000 Watt
 Model Mesin : GX420
 Tenaga : 16.0 / 3600 hp/rpm
 Kapasitas Tangki Bensin : 25.0 Liter
 Gulungan Dinamo : Tembaga
 Frekuensi : 50 Hz

Voltage : 220 V
 Ampere : 27.3 A
 Isi Silinder : 420 CC
 Tingkat Kebisingan : 82 Db
 Kapasitas Oli : 1.1 Liter
 Dimensi : 82 X 54 X 59 cm
 Berat : 90 kg

4STROKE
OHV - AIR COOLED

Instrumen :



GREEN 1300

GASOLINE GENERATOR SET

MESIN PEMBANGKIT LISTRIK BERBAHAN BAKAR BENJIN



2STROKE
OHV - AIR COOLED

SPESIFIKASI

| | |
|-------------------------|---------------------|
| Daya Output | : 850 Watt |
| Model Mesin | : ET950 |
| Tenaga | : 2.8 / 3000 hp/rpm |
| Kapasitas Tangki Bensin | : 4.0 Liter |
| Gulungan Dinamo | : Tembaga |
| Frekuensi | : 50 Hz |
| Voltage | : 220 V |
| Ampere | : 3.0 A |
| Isi Silinder | : 63 CC |
| Tingkat Kebisingan | : 56 Db |
| Dimensi | : 38 X 32 X 35 cm |
| Berat | : 19 kg |

Instrumen :

12 DC
OUTPUT

VOLTMETER

GREEN 1500

GASOLINE GENERATOR SET

MESIN PEMBANGKIT LISTRIK BERBAHAN BAKAR BENJIN



4STROKE
OHV - AIR COOLED

SPESIFIKASI

| | |
|-------------------------|---------------------|
| Daya Output | : 1000 Watt |
| Model Mesin | : 156F |
| Tenaga | : 3.0 / 4000 hp/rpm |
| Kapasitas Tangki Bensin | : 6.0 Liter |
| Gulungan Dinamo | : Tembaga |
| Frekuensi | : 50 Hz |
| Voltage | : 220 V |
| Ampere | : 4.5 A |
| Isi Silinder | : 98 CC |
| Tingkat Kebisingan | : 56 Db |
| Kapasitas Oli | : 0.6 Liter |
| Dimensi | : 46 X 37.5 X 40 cm |
| Berat | : 26.5 kg |

Instrumen :

BRUSH
ALTERNATOR

1 PLUG FEMALE

12 DC
OUTPUT

VOLT & HOUR METER

FUEL METER

AVR

UNIT

GASOLINE PARTS

DIESEL PARTS

RYU®

GREEN 2800

GASOLINE GENERATOR SET

MESIN PEMBANGKIT LISTRIK BERBAHAN BAKAR BENSLN

4STROKE
OHV - AIR COOLED

SPESIFIKASI

| | |
|-------------------------|---------------------|
| Daya Output | : 2000 Watt |
| Model Mesin | : GX200 |
| Tenaga | : 6.5 / 3600 hp/rpm |
| Kapasitas Tangki Bensin | : 16.0 Liter |
| Gulungan Dinamo | : Tembaga |
| Frekuensi | : 50 Hz |
| Voltage | : 220 V |
| Ampere | : 9.1 A |
| Isi Silinder | : 196 CC |
| Tingkat Kebisingan | : 76 Db |
| Kapasitas Oli | : 0.8 Liter |
| Dimensi | : 66 X 47 X 47 cm |
| Berat | : 50 kg |

Instrumen :



GREEN 3800

GASOLINE GENERATOR SET

MESIN PEMBANGKIT LISTRIK BERBAHAN BAKAR BENSLN

4STROKE
OHV - AIR COOLED

SPESIFIKASI

| | |
|-------------------------|---------------------|
| Daya Output | : 2500 Watt |
| Model Mesin | : GX200 |
| Tenaga | : 6.5 / 3600 hp/rpm |
| Kapasitas Tangki Bensin | : 16.0 Liter |
| Gulungan Dinamo | : Tembaga |
| Frekuensi | : 50 Hz |
| Voltage | : 220 V |
| Ampere | : 11.4 A |
| Isi Silinder | : 196 CC |
| Tingkat Kebisingan | : 76 Db |
| Kapasitas Oli | : 0.8 Liter |
| Dimensi | : 66 X 47 X 47 cm |
| Berat | : 52 kg |

Instrumen :



GREEN 7800

GASOLINE GENERATOR SET

MESIN PEMBANGKIT LISTRIK BERBAHAN BAKAR BENSLIN



4STROKE
OHV - AIR COOLED

SPESIFIKASI

| | |
|-------------------------|----------------------|
| Daya Output | : 5000 Watt |
| Model Mesin | : GX420 |
| Tenaga | : 16.0 / 3600 hp/rpm |
| Kapasitas Tangki Bensin | : 25.0 Liter |
| Gulungan Dinamo | : Tembaga |
| Frekuensi | : 50 Hz |
| Voltage | : 220 V |
| Ampere | : 22.7 A |
| Isi Silinder | : 420 CC |
| Tingkat Kebisingan | : 82 Db |
| Kapasitas Oli | : 1.1 Liter |
| Dimensi | : 82 X 54 X 58.5 cm |
| Berat | : 88 kg |

Instrumen :



RS1600

GASOLINE GENERATOR SET

MESIN PEMBANGKIT LISTRIK BERBAHAN BAKAR BENSLIN



4STROKE
OHV - AIR COOLED

SPESIFIKASI

| | |
|-------------------------|---------------------|
| Daya Output | : 950 Watt |
| Model Mesin | : 156F |
| Tenaga | : 3.0 / 4000 hp/rpm |
| Kapasitas Tangki Bensin | : 6.0 Liter |
| Gulungan Dinamo | : Tembaga |
| Frekuensi | : 50 Hz |
| Voltage | : 220 V |
| Ampere | : 4.5 - 5.0 A |
| Isi Silinder | : 98 CC |
| Tingkat Kebisingan | : 87 Db |
| Kapasitas Oli | : 0.6 Liter |
| Dimensi | : 44 X 37 X 34 cm |
| Berat | : 24 kg |

Instrumen :



BLACK 8800 GASOLINE GENERATOR SET

MESIN PEMBANGKIT LISTRIK BERBAHAN BAKAR BENSIN



SPESIFIKASI

| | |
|-------------------------|----------------------|
| Daya Output | : 6000 Watt |
| Model Mesin | : GX420 |
| Tenaga | : 16.0 / 3600 hp/rpm |
| Kapasitas Tangki Bensin | : 25.0 Liter |
| Gulungan Dinamo | : Tembaga |
| Frekuensi | : 50 Hz |

| | |
|--------------------|-------------------|
| Voltage | : 220 V |
| Ampere | : 27.3 A |
| Isi Silinder | : 420 CC |
| Tingkat Kebisingan | : 82 Db |
| Kapasitas Oli | : 1.1 Liter |
| Dimensi | : 81 X 53 X 59 cm |
| Berat | : 90 kg |

4STROKE
OHV - AIR COOLED

Instrumen :

BRUSH
ALTERNATOR

2-PLUG FEMALE

2 WHEEL TRANSPORT KIT

12DC
OUTPUT

VOLT & HOUR METER

FUEL METER

AVR

BLACK 1300

GASOLINE GENERATOR SET

MESIN PEMBANGKIT LISTRIK BERBAHAN BAKAR BENJIN



2STROKE
OHV - AIR COOLED

SPESIFIKASI

| | |
|-------------------------|---------------------|
| Daya Output | : 850 Watt |
| Model Mesin | : ET950 |
| Tenaga | : 2.8 / 3000 hp/rpm |
| Kapasitas Tangki Bensin | : 4.0 Liter |
| Gulungan Dinamo | : Tembaga |
| Frekuensi | : 50 Hz |
| Voltage | : 220 V |
| Ampere | : 3.0 A |
| Isi Silinder | : 63 CC |
| Tingkat Kebisingan | : 56 Db |
| Dimensi | : 38 X 32 X 35 cm |
| Berat | : 19 kg |

Instrumen :

12DC
OUTPUT

VOLTMETER

AVR CAPACITOR

BLACK 1500

GASOLINE GENERATOR SET

MESIN PEMBANGKIT LISTRIK BERBAHAN BAKAR BENJIN



4STROKE
OHV - AIR COOLED

SPESIFIKASI

| | |
|-------------------------|---------------------|
| Daya Output | : 1000 Watt |
| Model Mesin | : 156F |
| Tenaga | : 3.0 / 4000 hp/rpm |
| Kapasitas Tangki Bensin | : 6.0 Liter |
| Gulungan Dinamo | : Tembaga |
| Frekuensi | : 50 Hz |
| Voltage | : 220 V |
| Ampere | : 4.5 A |
| Isi Silinder | : 98 CC |
| Tingkat Kebisingan | : 56 Db |
| Kapasitas Oli | : 0.6 Liter |
| Dimensi | : 46 X 37.5 X 40 cm |
| Berat | : 26.5 kg |

Instrumen :

BRUSH
ALTERNATOR

1 PLUG FEMALE

12DC
OUTPUT

VOLT & HOUR METER

FUEL METER

AVR

UNIT

GASOLINE PARTS

DIESEL PARTS

RYU®

BLACK 2800

GASOLINE GENERATOR SET

MESIN PEMBANGKIT LISTRIK BERBAHAN BAKAR BENSOIN

4STROKE
OHV - AIR COOLED

SPESIFIKASI

| | |
|-------------------------|-----------------------|
| Daya Output | : 2000 Watt |
| Model Mesin | : GX200 |
| Tenaga | : 6.5 / 3600 hp/rpm |
| Kapasitas Tangki Bensin | : 17.0 Liter |
| Gulungan Dinamo | : Tembaga |
| Frekuensi | : 50 Hz |
| Voltage | : 220 V |
| Ampere | : 9.1 A |
| Isi Silinder | : 196 CC |
| Tingkat Kebisingan | : 76 Db |
| Kapasitas Oli | : 0.8 Liter |
| Dimensi | : 67 X 45.5 X 49.5 cm |
| Berat | : 50 kg |

Instrumen :



BLACK 3800

GASOLINE GENERATOR SET

MESIN PEMBANGKIT LISTRIK BERBAHAN BAKAR BENSOIN

4STROKE
OHV - AIR COOLED

SPESIFIKASI

| | |
|-------------------------|-----------------------|
| Daya Output | : 2500 Watt |
| Model Mesin | : GX200 |
| Tenaga | : 6.5 / 3600 hp/rpm |
| Kapasitas Tangki Bensin | : 17.0 Liter |
| Gulungan Dinamo | : Tembaga |
| Frekuensi | : 50 Hz |
| Voltage | : 220 V |
| Ampere | : 11.4 A |
| Isi Silinder | : 196 CC |
| Tingkat Kebisingan | : 76 Db |
| Kapasitas Oli | : 0.8 Liter |
| Dimensi | : 67 X 45.5 X 49.5 cm |
| Berat | : 52 kg |

Instrumen :



BLACK 7800

GASOLINE GENERATOR SET

MESIN PEMBANGKIT LISTRIK BERBAHAN BAKAR BENSLN

4STROKE
OHV - AIR COOLED

SPESIFIKASI

| | |
|-------------------------|----------------------|
| Daya Output | : 5000 Watt |
| Model Mesin | : GX420 |
| Tenaga | : 16.0 / 3600 hp/rpm |
| Kapasitas Tangki Bensin | : 25.0 Liter |
| Gulungan Dinamo | : Tembaga |
| Frekuensi | : 50 Hz |
| Voltage | : 220 V |
| Ampere | : 22.7 A |
| Isi Silinder | : 420 CC |
| Tingkat Kebisingan | : 82 Db |
| Kapasitas Oli | : 1.1 Liter |
| Dimensi | : 81 X 53 X 59 cm |
| Berat | : 88 kg |



Instrumen :

BRUSH
ALTERNATOR



12 DC
OUTPUT



AVR

UNIT

GASOLINE PARTS

DIESEL PARTS

RYU®



TEKIRO CORPORATION



GASOLINE ENGINE

GREEN 500V GASOLINE ENGINE

MESIN PENGGERAK BERBAHAN BAKAR BENSSIN



SPESIFIKASI

Tenaga : 20/3600 hp/rpm
 Isi Silinder : 499 CC
 Pengapian : Transistor Magneto
 Kapasitas Tangki Bensin : 7.0 Liter
 Diameter X Langkah : 94 x 72 mm
 Rasio Kompresi : 8.7 : 1

Starter : Recoil Starter
 Kapasitas Oli : 1.2 Liter
 Dimensi : 53 x 46 x 54 cm
 Berat : 40.50 Kg

HORIZONTAL SHAFT
4STROKE
 AIR COOLED, OHV SINGLE CYL



CYLINDER HEAD ASSY
MODEL V
 (4 BAUT)



CARBURATOR ASSY
SELENOID RUIXING

GREEN 160

GASOLINE ENGINE

MESIN PENGGERAK BERBAHAN BAKAR BENJIN



4STROKE
OHV - AIR COOLED

SPEKIFIKASI

NORMAL SPEED

| | |
|-------------------------|----------------------|
| Tenaga | : 5.5/3600 hp/rpm |
| Isi Silinder | : 163 CC |
| Pengapian | : Transistor Magneto |
| Kapasitas Tangki Bensin | : 3.6 Liter |
| Diameter X Langkah | : 68 x 45 mm |
| Rasio Kompresi | : 8.5 : 1 |
| Starter | : Recoil Starter |
| Kapasitas Oli | : 0.8 Liter |
| Dimensi | : 39 x 33 x 33 cm |
| Berat | : 15 Kg |



GREEN 200

GASOLINE ENGINE

MESIN PENGGERAK BERBAHAN BAKAR BENJIN



4STROKE
OHV - AIR COOLED

SPEKIFIKASI

NORMAL SPEED

LOW SPEED

| | | |
|-------------------------|----------------------|----------------------|
| Tenaga | : 6.5/3600 hp/rpm | : 6.5/1800 hp/rpm |
| Isi Silinder | : 196 CC | : 196 CC |
| Pengapian | : Transistor Magneto | : Transistor Magneto |
| Kapasitas Tangki Bensin | : 3.6 Liter | : 3.6 Liter |
| Diameter X Langkah | : 68 x 54 mm | : 68 x 54 mm |
| Rasio Kompresi | : 8.5 : 1 | : 8.5 : 1 |
| Starter | : Recoil Starter | : Recoil Starter |
| Kapasitas Oli | : 0.8 Liter | : 0.8 Liter |
| Dimensi | : 39 x 33 x 33 cm | : 39 x 38 x 34 cm |
| Berat | : 15 Kg | : 16.64 Kg |



GREEN 210

GASOLINE ENGINE

MESIN PENGGERAK BERBAHAN BAKAR BENJIN



4STROKE
OHV - AIR COOLED

SPEKIFIKASI

NORMAL SPEED

LOW SPEED

| | | |
|-------------------------|----------------------|----------------------|
| Tenaga | : 7.0/3600 hp/rpm | : 7.0/1800 hp/rpm |
| Isi Silinder | : 212 CC | : 212 CC |
| Pengapian | : Transistor Magneto | : Transistor Magneto |
| Kapasitas Tangki Bensin | : 3.6 Liter | : 3.6 Liter |
| Diameter X Langkah | : 70 x 55 mm | : 70 x 55 mm |
| Rasio Kompresi | : 8.5 : 1 | : 8.5 : 1 |
| Starter | : Recoil Starter | : Recoil Starter |
| Kapasitas Oli | : 0.8 Liter | : 0.8 Liter |
| Dimensi | : 40 x 35.5 x 37 cm | : 40 x 38 x 38 cm |
| Berat | : 18 Kg | : 19 Kg |



GREEN 225 GASOLINE ENGINE

MESIN PENGGERAK BERBAHAN BAKAR BENJIN

4STROKE
OHV - AIR COOLED



SPEKIFIKASI

NORMAL SPEED

LOW SPEED

| | | |
|-------------------------|----------------------|----------------------|
| Tenaga | : 7.5/3600 hp/rpm | : 7.5/1800 hp/rpm |
| Isi Silinder | : 224 CC | : 224 CC |
| Pengapian | : Transistor Magneto | : Transistor Magneto |
| Kapasitas Tangki Bensin | : 3.6 Liter | : 3.6 Liter |
| Diameter X Langkah | : 72 x 55 mm | : 72 x 55 mm |
| Rasio Kompresi | : 8.5 : 1 | : 8.5 : 1 |
| Starter | : Recoil Starter | : Recoil Starter |
| Kapasitas Oli | : 0.8 Liter | : 0.8 Liter |
| Dimensi | : 40 x 35.5 x 37 cm | : 40 x 38 x 38 cm |
| Berat | : 18 Kg | : 19.5 Kg |



GREEN 270 GASOLINE ENGINE

MESIN PENGGERAK BERBAHAN BAKAR BENJIN

4STROKE
OHV - AIR COOLED



SPEKIFIKASI

NORMAL SPEED

LOW SPEED

| | | |
|-------------------------|----------------------|----------------------|
| Tenaga | : 9.0/3600 hp/rpm | : 9.0/1800 hp/rpm |
| Isi Silinder | : 270 CC | : 270 CC |
| Pengapian | : Transistor Magneto | : Transistor Magneto |
| Kapasitas Tangki Bensin | : 6.5 Liter | : 6.5 Liter |
| Diameter X Langkah | : 77 x 58 mm | : 77 x 58 mm |
| Rasio Kompresi | : 8.2 : 1 | : 8.2 : 1 |
| Starter | : Recoil Starter | : Recoil Starter |
| Kapasitas Oli | : 1 Liter | : 1 Liter |
| Dimensi | : 54 x 45 x 48 cm | : 54 x 48 x 48 cm |
| Berat | : 26.5 Kg | : 28.3 Kg |



GREEN 390 GASOLINE ENGINE

MESIN PENGGERAK BERBAHAN BAKAR BENJIN

4STROKE
OHV - AIR COOLED



SPEKIFIKASI

NORMAL SPEED

LOW SPEED

| | | |
|-------------------------|----------------------|----------------------|
| Tenaga | : 13.0/3600 hp/rpm | : 13.0/1800 hp/rpm |
| Isi Silinder | : 389 CC | : 389 CC |
| Pengapian | : Transistor Magneto | : Transistor Magneto |
| Kapasitas Tangki Bensin | : 6.5 Liter | : 6.5 Liter |
| Diameter X Langkah | : 88 x 64 mm | : 88 x 64 mm |
| Rasio Kompresi | : 8.0 : 1 | : 8.0 : 1 |
| Starter | : Recoil Starter | : Recoil Starter |
| Kapasitas Oli | : 1.1 Liter | : 1.1 Liter |
| Dimensi | : 54 x 45 x 48 cm | : 54 x 48 x 48 cm |
| Berat | : 32.6 Kg | : 36.7 Kg |



UNIT

GASOLINE PARTS

DIESEL PARTS

RYU®

GREEN 420 GASOLINE ENGINE

MESIN PENGGERAK BERBAHAN BAKAR BENSLIN



4STROKE
OHV - AIR COOLED

SPEKIFIKASI

NORMAL SPEED

LOW SPEED

| | | |
|-------------------------|----------------------|----------------------|
| Tenaga | : 16.0/3600 hp/rpm | : 16.0/1800 hp/rpm |
| Isi Silinder | : 420 CC | : 420 CC |
| Pengapian | : Transistor Magneto | : Transistor Magneto |
| Kapasitas Tangki Bensin | : 6.5 Liter | : 6.5 Liter |
| Diameter X Langkah | : 90 x 66 mm | : 90 x 66 mm |
| Rasio Kompresi | : 8.0 : 1 | : 8.0 : 1 |
| Starter | : Recoil Starter | : Recoil Starter |
| Kapasitas Oli | : 1.1 Liter | : 1.1 Liter |
| Dimensi | : 54 x 45 x 48 cm | : 54 x 48 x 48 cm |
| Berat | : 32.7 Kg | : 35.74 Kg |



GREEN 460++ GASOLINE ENGINE

MESIN PENGGERAK BERBAHAN BAKAR BENSLIN



4STROKE
OHV - AIR COOLED

SPEKIFIKASI

NORMAL SPEED

LOW SPEED

| | | |
|-------------------------|----------------------|----------------------|
| Tenaga | : 18.0/3600 hp/rpm | : 18.0/1800 hp/rpm |
| Isi Silinder | : 459 CC | : 459 CC |
| Pengapian | : Transistor Magneto | : Transistor Magneto |
| Kapasitas Tangki Bensin | : 6.5 Liter | : 6.5 Liter |
| Diameter X Langkah | : 92 x 66 mm | : 92 x 66 mm |
| Rasio Kompresi | : 8.0 : 1 | : 8.0 : 1 |
| Starter | : Recoil Starter | : Recoil Starter |
| Kapasitas Oli | : 1.1 Liter | : 1.1 Liter |
| Dimensi | : 54 x 45 x 48 cm | : 54 x 48 x 48 cm |
| Berat | : 32.8 Kg | : 35.48 Kg |



GREEN 630E GASOLINE ENGINE

MESIN PENGGERAK BERBAHAN BAKAR BENSLIN



4STROKE
OHV - AIR COOLED

SPEKIFIKASI

NORMAL SPEED

| | |
|-------------------------|-----------------------------|
| Tenaga | : 20/3600 hp/rpm |
| Isi Silinder | : 630 CC |
| Pengapian | : Transistor Magneto |
| Kapasitas Tangki Bensin | : 11.0 Liter |
| Diameter X Langkah | : 96 x 86.6 mm |
| Rasio Kompresi | : 8.0 : 1 |
| Starter | : Recoil & Elektrik Starter |
| Kapasitas Oli | : 1.1 Liter |
| Dimensi | : 58.5 x 46 x 48 cm |
| Berat | : 45 Kg |



BLACK 500V GASOLINE ENGINE

MESIN PENGGERAK BERBAHAN BAKAR BENSIN

UNIT



GASOLINE PARTS



DIESEL PARTS

SPESIFIKASI

Tenaga : 20/3600 hp/rpm
 Isi Silinder : 499 CC
 Pengapian : Transistor Magneto
 Kapasitas Tangki Bensin : 7.0 Liter
 Diameter X Langkah : 94 x 72 mm
 Rasio Kompresi : 8.7 : 1

Starter : Recoil Starter
 Kapasitas Oli : 1.2 Liter
 Dimensi : 53 x 46 x 54 cm
 Berat : 40.50 Kg

HORIZONTAL SHAFT
4STROKE
 AIR COOLED, OHV SINGLE CYL



CYLINDER HEAD ASSY
MODEL V
 (4 BAUT)



CARBURATOR ASSY
SELENOID RUIXING

RYU®

BLACK 160

GASOLINE ENGINE

MESIN PENGGERAK BERBAHAN BAKAR BENJIN

4STROKE
OHV - AIR COOLED

SPEKIFIKASI

NORMAL SPEED



| | |
|-------------------------|----------------------|
| Tenaga | : 5.5/3600 hp/rpm |
| Isi Silinder | : 163 CC |
| Pengapian | : Transistor Magneto |
| Kapasitas Tangki Bensin | : 3.6 Liter |
| Diameter X Langkah | : 68 x 45 mm |
| Rasio Kompresi | : 8.5 : 1 |
| Starter | : Recoil Starter |
| Kapasitas Oli | : 0.8 Liter |
| Dimensi | : 39 x 33 x 33 cm |
| Berat | : 15 Kg |



BLACK 200

GASOLINE ENGINE

MESIN PENGGERAK BERBAHAN BAKAR BENJIN

4STROKE
OHV - AIR COOLED

SPEKIFIKASI

NORMAL SPEED

LOW SPEED



| | | |
|-------------------------|----------------------|----------------------|
| Tenaga | : 6.5/3600 hp/rpm | : 6.5/1800 hp/rpm |
| Isi Silinder | : 196 CC | : 196 CC |
| Pengapian | : Transistor Magneto | : Transistor Magneto |
| Kapasitas Tangki Bensin | : 3.6 Liter | : 3.6 Liter |
| Diameter X Langkah | : 68 x 54 mm | : 68 x 54 mm |
| Rasio Kompresi | : 8.5 : 1 | : 8.5 : 1 |
| Starter | : Recoil Starter | : Recoil Starter |
| Kapasitas Oli | : 0.8 Liter | : 0.8 Liter |
| Dimensi | : 39 x 33 x 33 cm | : 39 x 38 x 34 cm |
| Berat | : 15 Kg | : 16.64 Kg |



BLACK 210

GASOLINE ENGINE

MESIN PENGGERAK BERBAHAN BAKAR BENJIN

4STROKE
OHV - AIR COOLED

SPEKIFIKASI

NORMAL SPEED

LOW SPEED



| | | |
|-------------------------|----------------------|----------------------|
| Tenaga | : 7.0/3600 hp/rpm | : 7.0/1800 hp/rpm |
| Isi Silinder | : 212 CC | : 212 CC |
| Pengapian | : Transistor Magneto | : Transistor Magneto |
| Kapasitas Tangki Bensin | : 3.6 Liter | : 3.6 Liter |
| Diameter X Langkah | : 70 x 55 mm | : 70 x 55 mm |
| Rasio Kompresi | : 8.5 : 1 | : 8.5 : 1 |
| Starter | : Recoil Starter | : Recoil Starter |
| Kapasitas Oli | : 0.8 Liter | : 0.8 Liter |
| Dimensi | : 40 x 35.5 x 37 cm | : 40 x 38 x 38 cm |
| Berat | : 18 Kg | : 19 Kg |



BLACK 225 GASOLINE ENGINE

MESIN PENGGERAK BERBAHAN BAKAR BENJIN

4STROKE
OHV - AIR COOLED



SPEKIFIKASI

NORMAL SPEED

LOW SPEED

| | | |
|-------------------------|----------------------|----------------------|
| Tenaga | : 7.5/3600 hp/rpm | : 7.5/1800 hp/rpm |
| Isi Silinder | : 224 CC | : 224 CC |
| Pengapian | : Transistor Magneto | : Transistor Magneto |
| Kapasitas Tangki Bensin | : 3.6 Liter | : 3.6 Liter |
| Diameter X Langkah | : 72 x 55 mm | : 72 x 55 mm |
| Rasio Kompresi | : 8.5 : 1 | : 8.5 : 1 |
| Starter | : Recoil Starter | : Recoil Starter |
| Kapasitas Oli | : 0.8 Liter | : 0.8 Liter |
| Dimensi | : 40 x 35.5 x 37 cm | : 40 x 38 x 38 cm |
| Berat | : 18 Kg | : 19.5 Kg |



BLACK 270 GASOLINE ENGINE

MESIN PENGGERAK BERBAHAN BAKAR BENJIN

4STROKE
OHV - AIR COOLED



SPEKIFIKASI

NORMAL SPEED

LOW SPEED

| | | |
|-------------------------|----------------------|----------------------|
| Tenaga | : 9.0/3600 hp/rpm | : 9.0/1800 hp/rpm |
| Isi Silinder | : 270 CC | : 270 CC |
| Pengapian | : Transistor Magneto | : Transistor Magneto |
| Kapasitas Tangki Bensin | : 6.5 Liter | : 6.5 Liter |
| Diameter X Langkah | : 77 x 58 mm | : 77 x 58 mm |
| Rasio Kompresi | : 8.2 : 1 | : 8.2 : 1 |
| Starter | : Recoil Starter | : Recoil Starter |
| Kapasitas Oli | : 1 Liter | : 1 Liter |
| Dimensi | : 54 x 45 x 48 cm | : 54 x 48 x 48 cm |
| Berat | : 26.5 Kg | : 28.3 Kg |



BLACK 390 GASOLINE ENGINE

MESIN PENGGERAK BERBAHAN BAKAR BENJIN

4STROKE
OHV - AIR COOLED



SPEKIFIKASI

NORMAL SPEED

LOW SPEED

| | | |
|-------------------------|----------------------|----------------------|
| Tenaga | : 13.0/3600 hp/rpm | : 13.0/1800 hp/rpm |
| Isi Silinder | : 389 CC | : 389 CC |
| Pengapian | : Transistor Magneto | : Transistor Magneto |
| Kapasitas Tangki Bensin | : 6.5 Liter | : 6.5 Liter |
| Diameter X Langkah | : 88 x 64 mm | : 88 x 64 mm |
| Rasio Kompresi | : 8.0 : 1 | : 8.0 : 1 |
| Starter | : Recoil Starter | : Recoil Starter |
| Kapasitas Oli | : 1.1 Liter | : 1.1 Liter |
| Dimensi | : 54 x 45 x 48 cm | : 54 x 48 x 48 cm |
| Berat | : 32.6 Kg | : 36.7 Kg |



BLACK 420 GASOLINE ENGINE

MESIN PENGGERAK BERBAHAN BAKAR BENSLIN



4STROKE
OHV - AIR COOLED

SPEKIFIKASI

**NORMAL
SPEED**

**LOW
SPEED**

| | | |
|-------------------------|----------------------|----------------------|
| Tenaga | : 16.0/3600 hp/rpm | : 16.0/1800 hp/rpm |
| Isi Silinder | : 420 CC | : 420 CC |
| Pengapian | : Transistor Magneto | : Transistor Magneto |
| Kapasitas Tangki Bensin | : 6.5 Liter | : 6.5 Liter |
| Diameter X Langkah | : 90 x 66 mm | : 90 x 66 mm |
| Rasio Kompresi | : 8.0 : 1 | : 8.0 : 1 |
| Starter | : Recoil Starter | : Recoil Starter |
| Kapasitas Oli | : 1.1 Liter | : 1.1 Liter |
| Dimensi | : 54 x 45 x 48 cm | : 54 x 48 x 48 cm |
| Berat | : 32.7 Kg | : 35.74 Kg |



BLACK 460++ GASOLINE ENGINE

MESIN PENGGERAK BERBAHAN BAKAR BENSLIN



4STROKE
OHV - AIR COOLED

SPEKIFIKASI

**NORMAL
SPEED**

**LOW
SPEED**

| | | |
|-------------------------|----------------------|----------------------|
| Tenaga | : 18.0/3600 hp/rpm | : 18.0/1800 hp/rpm |
| Isi Silinder | : 459 CC | : 459 CC |
| Pengapian | : Transistor Magneto | : Transistor Magneto |
| Kapasitas Tangki Bensin | : 6.5 Liter | : 6.5 Liter |
| Diameter X Langkah | : 92 x 66 mm | : 92 x 66 mm |
| Rasio Kompresi | : 8.0 : 1 | : 8.0 : 1 |
| Starter | : Recoil Starter | : Recoil Starter |
| Kapasitas Oli | : 1.1 Liter | : 1.1 Liter |
| Dimensi | : 54 x 45 x 48 cm | : 54 x 48 x 48 cm |
| Berat | : 32.8 Kg | : 35.48 Kg |





GASOLINE
WATER PUMP

RS10CX

GASOLINE WATER PUMP

MESIN POMPA AIR BERBAHAN BAKAR BENSIN



25STROKE

SPESIFIKASI

| | |
|---------------------------------|-------------------------|
| Diameter Konektor Hisap & Buang | : 25 mm (1 inch) |
| Tipe Mesin | : TU26 |
| Tenaga | : 0.7 / 6600 kw/rpm |
| Kapasitas Tangki Bensin | : 0.6 Liter |
| Debit Air | : 8 M ³ /Jam |
| Maksimal Daya Dorong | : 30 meter |
| Maksimal Daya Hisap | : 8 meter |
| Isi Silinder | : 26 CC |
| Kapasitas Oli | : 25 : 1 |
| Pengapian | : Magneto Assy. |
| Starter | : Recoil Starter |
| Dimensi | : 35 X 23 X 32 cm |
| Berat | : 6 Kg |

GREEN 20CX

GASOLINE WATER PUMP

MESIN POMPA AIR BERBAHAN BAKAR BENJIN



4STROKE
OHV - AIR COOLED

SPESIFIKASI

| | |
|---------------------------------|----------------------|
| Diameter Konektor Hisap & Buang | : 50 mm (2 inch) |
| Tipe Mesin | : GX200 |
| Tenaga | : 6.5 / 3600 hp/rpm |
| Kapasitas Tangki Bensin | : 3.6 Liter |
| Debit Air | : 600 Liter / Menit |
| Maksimal Daya Dorong | : 28 meter |
| Maksimal Daya Hisap | : 8 meter |
| Isi Silinder | : 196 CC |
| Kapasitas Oli | : 0.8 Liter |
| Pengapian | : Transistor Magneto |
| Starter | : Recoil Starter |
| Dimensi | : 49 X 39.5 X 43 cm |
| Berat | : 26.74 Kg |

GREEN 30CX BIG PUMP

GASOLINE WATER PUMP

MESIN POMPA AIR BERBAHAN BAKAR BENJIN



4STROKE
OHV - AIR COOLED

SPESIFIKASI

| | |
|---------------------------------|----------------------|
| Diameter Konektor Hisap & Buang | : 80 mm (3 inch) |
| Tipe Mesin | : GX200 |
| Tenaga | : 6.5 / 3600 hp/rpm |
| Kapasitas Tangki Bensin | : 3.6 Liter |
| Debit Air | : 1100 Liter / Menit |
| Maksimal Daya Dorong | : 30 meter |
| Maksimal Daya Hisap | : 8 meter |
| Isi Silinder | : 196 CC |
| Kapasitas Oli | : 0.8 Liter |
| Pengapian | : Transistor Magneto |
| Starter | : Recoil Starter |
| Dimensi | : 54.5 X 40 X 51 cm |
| Berat | : 30.32 Kg |

GREEN 30SS

GASOLINE WATER PUMP

MESIN POMPA AIR BERBAHAN BAKAR BENJIN



4STROKE
OHV - AIR COOLED

SPESIFIKASI

| | |
|---------------------------------|----------------------|
| Diameter Konektor Hisap & Buang | : 80 mm (3 inch) |
| Tipe Mesin | : GX200 |
| Tenaga | : 6.5 / 3600 hp/rpm |
| Kapasitas Tangki Bensin | : 3.6 Liter |
| Debit Air | : 1100 Liter / Menit |
| Maksimal Daya Dorong | : 30 Meter |
| Maksimal Daya Hisap | : 8 Meter |
| Isi Silinder | : 196 CC |
| Kapasitas Oli | : 0.8 Liter |
| Pengapian | : Transistor Magneto |
| Starter | : Recoil Starter |
| Dimensi | : 53 X 39 X 46.5 cm |
| Berat | : 28.7 Kg |

GREEN 40CX

GASOLINE WATER PUMP

MESIN POMPA AIR BERBAHAN BAKAR BENSLN

4STROKE
OHV - AIR COOLED

SPEKIFIKASI



| | |
|---------------------------------|-----------------------|
| Diameter Konektor Hisap & Buang | : 100 mm (4 inch) |
| Tipe Mesin | : GX390 |
| Tenaga | : 13.0 / 3600 hp/rpm |
| Kapasitas Tangki Bensin | : 6.5 Liter |
| Debit Air | : 1600 Liter / Menit |
| Maksimal Daya Dorong | : 30 Meter |
| Maksimal Daya Hisap | : 8 Meter |
| Isi Silinder | : 389 CC |
| Kapasitas Oli | : 1.1 Liter |
| Pengapian | : Transistor Magneto |
| Starter | : Recoil Starter |
| Dimensi | : 63 X 49.5 X 56.5 cm |
| Berat | : 53.12 Kg |

RS15CX

SQUARE

MESIN POMPA AIR BERBAHAN BAKAR BENSLN

4STROKE
AIR COOLED

SPEKIFIKASI



| | |
|---------------------------------|---------------------------|
| Diameter Konektor Hisap & Buang | : 40 mm (1.5 inch) |
| Tipe Mesin | : BS100/ 154 |
| Tenaga | : 3 / 3600 hp/rpm |
| Kapasitas Tangki Bensin | : 1.4 Liter |
| Debit Air | : 10 M ³ / Jam |
| Maksimal Daya Dorong | : 15 Meter |
| Maksimal Daya Hisap | : 6 Meter |
| Isi Silinder | : 196 CC |
| Kapasitas Oli | : 0.35 Liter |
| Pengapian | : Magneto Assy. |
| Starter | : Recoil Starter |
| Dimensi | : 36.5 X 32 X 38 cm |
| Berat | : 11 Kg |

RS15CX

ROUND

MESIN POMPA AIR BERBAHAN BAKAR BENSLN

4STROKE
AIR COOLED

SPEKIFIKASI



| | |
|---------------------------------|---------------------------|
| Diameter Konektor Hisap & Buang | : 40 mm (1.5 inch) |
| Tipe Mesin | : BS100/ 154 |
| Tenaga | : 3 / 3600 hp/rpm |
| Kapasitas Tangki Bensin | : 1.4 Liter |
| Debit Air | : 10 M ³ / Jam |
| Maksimal Daya Dorong | : 15 Meter |
| Maksimal Daya Hisap | : 9 Meter |
| Isi Silinder | : 196 CC |
| Kapasitas Oli | : 0.35 Liter |
| Pengapian | : Magneto Assy. |
| Starter | : Recoil Starter |
| Dimensi | : 40.5 X 30.5 X 39 cm |
| Berat | : 12 Kg |

RS30SS

GASOLINE WATER PUMP

MESIN POMPA AIR BERBAHAN BAKAR BENSIN



SPESIFIKASI

Diameter Konektor Hisap & Buang
Tipe Mesin
Tenaga
Kapasitas Tangki Bensin
Debit Air
Maksimal Daya Dorong
Maksimal Daya Hisap
Isi Silinder
Kapasitas Oli
Pengapian
Starter
Dimensi
Berat

MODEL DRAT

: 80 mm (3 inch)
: 170F / GX210
: 7.0 / 3600 hp/rpm
: 4 Liter
: 1000 Liter / Menit
: 30 Meter
: 8 Meter
: 212 CC
: 0.8 Liter
: Transistor Magneto
: Recoil Starter
: 52 x 40 x 34 cm
: 23.66 Kg

MODEL SPIH

: 80 mm (3 inch)
: 170F / GX210
: 7.0 / 3600 hp/rpm
: 4 Liter
: 1000 Liter / Menit
: 30 Meter
: 8 Meter
: 212 CC
: 0.8 Liter
: Transistor Magneto
: Recoil Starter
: 52 x 40 x 34 cm
: 23.66 Kg

UNIT

GASOLINE PARTS

DIESEL PARTS

RYU®

BLACK 20CX

GASOLINE WATER PUMP

MESIN POMPA AIR BERBAHAN BAKAR BENSLIN



4STROKE
OHV - AIR COOLED

SPEKIFIKASI

| | |
|---------------------------------|----------------------|
| Diameter Konektor Hisap & Buang | : 50 mm (2 inch) |
| Tipe Mesin | : GX200 |
| Tenaga | : 6.5 / 3600 hp/rpm |
| Kapasitas Tangki Bensin | : 3.6 Liter |
| Debit Air | : 600 Liter / Menit |
| Maksimal Daya Dorong | : 28 Meter |
| Maksimal Daya Hisap | : 8 Meter |
| Isi Silinder | : 196 CC |
| Kapasitas Oli | : 0.8 Liter |
| Pengapian | : Transistor Magneto |
| Starter | : Recoil Starter |
| Dimensi | : 49 X 39.5 X 43 cm |
| Berat | : 26.74 Kg |

BLACK 30CX BIG PUMP

GASOLINE WATER PUMP

MESIN POMPA AIR BERBAHAN BAKAR BENSLIN



4STROKE
OHV - AIR COOLED

SPEKIFIKASI

| | |
|---------------------------------|----------------------|
| Diameter Konektor Hisap & Buang | : 80 mm (3 inch) |
| Tipe Mesin | : GX200 |
| Tenaga | : 6.5 / 3600 hp/rpm |
| Kapasitas Tangki Bensin | : 3.6 Liter |
| Debit Air | : 1100 Liter / Menit |
| Maksimal Daya Dorong | : 30 Meter |
| Maksimal Daya Hisap | : 8 Meter |
| Isi Silinder | : 196 CC |
| Kapasitas Oli | : 0.8 Liter |
| Pengapian | : Transistor Magneto |
| Starter | : Recoil Starter |
| Dimensi | : 54.5 X 40 X 51 cm |
| Berat | : 30.32 Kg |

BLACK 30SS

GASOLINE WATER PUMP

MESIN POMPA AIR BERBAHAN BAKAR BENSLIN



4STROKE
OHV - AIR COOLED

SPEKIFIKASI

| | |
|---------------------------------|----------------------|
| Diameter Konektor Hisap & Buang | : 80 mm (3 inch) |
| Tipe Mesin | : GX200 |
| Tenaga | : 6.5 / 3600 hp/rpm |
| Kapasitas Tangki Bensin | : 3.6 Liter |
| Debit Air | : 1100 Liter / Menit |
| Maksimal Daya Dorong | : 30 Meter |
| Maksimal Daya Hisap | : 8 Meter |
| Isi Silinder | : 196 CC |
| Kapasitas Oli | : 0.8 Liter |
| Pengapian | : Transistor Magneto |
| Starter | : Recoil Starter |
| Dimensi | : 53 X 39 X 46.5 cm |
| Berat | : 28.7 Kg |

RS398 BRUSH CUTTER

MESIN PEMOTONG RUMPUT



HORIZONTAL SHAFT
2STROKE
AIR COOLED, OHV SINGLE CYL

SPESIFIKASI

| | |
|------------------------------|--|
| Tipe Mesin | : BG328, 2 Tak, 1 Silinder, Sistem Pendingin Udara |
| kapasitas Mesin | : 30.5 CC |
| Daya Maksimal | : 0.81 Kw |
| Karburator | : Tipe Apung |
| Sistem Penyalaan | : Ignation Coil, Magneto |
| Busi Penyalaan | : BM-7A Champion CJ6 |
| Bahan Bakar | : Bensin campur oli mesin 2 Tak/ langkah, 1 : 25 |
| Kapasitas Tangki Bahan Bakar | : 1.4 Liter |
| Drive/ Menggerakan | : Flexiber Shaft, Drive Shar, Pinopn dan Gear |
| Arah Putaran Pemotongan | : Counter-Clockwise / Berlawanan arah jarum jam |
| Dimensi (PxLxT) | : 30 x 26 x 41.5 cm |
| Berat | : 10.28 Kg |

RS5900

GASOLINE CHAIN SAW

(22") (STEEL ALLOY)

MESIN GERGAJI KAYU



25STROKE
OHV - AIR COOLED

SPESIFIKASI

| | | | |
|---|--------------------|------------------------|--------------------------------------|
| Panjang Papan Gergaji | : 22 inch | Jumlah Gigi Rantai | : 38 Gigi-Steel Alloy |
| Maksimal Kekuatan Mesin | : 2.2 Kw/ 8500 rpm | Gigi Pemotong | : 7T-3/8 inch |
| Maksimal Kecepatan Putaran Normal | : 2800 rpm | Jarak Rantai Gergaji | : 0.325 inch |
| Maksimal Kecepatan Pada Saat Pemotongan | : 1000 rpm | Ukuran Rantai Gergaji | : 0.058 inch |
| Isi Silinder | : 52 cc | Tipe Papan Gergaji | : Sproket Nose |
| Karburator | : Walbro | Sistem Pelumasan | : Pompa Otomatis (Mudah Disesuaikan) |
| Kapasitas Tangki Bensin | : 550 ml | Bensin Campur Oli | : 25 : 1 |
| Pengapian | : Magneto / CDI | Kapasitas Oli Rantai | : 260 ml - SAE 10W-30 |
| Knalpot | : 2 Lubang | Berat | : 4.8 kg |
| Starter | : Recoil Starter | (Tanpa Papan & Rantai) | |
| Maksimal Panjang Potongan | : 38 cm | Dimensi | : 40 x 28 x 26 cm |
| | | (Tanpa Papan & Rantai) | |

RS30 POWER SPRAYER

MESIN PENYEMPROT



| SPESIFIKASI | RS22 | RS30 |
|-------------|--|--|
| Daya Mesin | : 4 - 5.5 hp | : 5.5 - 6.5 hp |
| Daya Hisap | : 14 - 22 Liter / Menit | : 34 - 50 Liter / Menit |
| Kecepatan | : 800 - 1200 rpm | : 800 - 1200 rpm |
| Plunger | : Diameter Langkah : 3 x 22 x 16 mm | : Diameter Langkah : 3 x 30 x 20 mm |
| Tekanan | : 0 - 40 kg/cm | : 0 - 40 kg/cm |
| Berat | : 8.3 kg | : 11.5 kg |
| Dimensi | : 37.5 x 28.5 x 33 cm | : 42 x 30.5 x 33 cm |

UNIT

GASOLINE PARTS

DIESEL PARTS

RYU

3RYU2.5/31

SUBMERSIBLE PUMP 1.5 HP

POMPA CELUP



JUMLAH
IMPELLER
31

SPAREPARTS:



CHAMBER

OUTPUT PIPE

CONNECTOR

SWITCH

CAPACITOR

THERMAL

SPESIFIKASI

| | |
|-----------------------|----------------------------|
| Daya Pompa | : 1.5 hp 1.1 kw 7.2A |
| Listrik 1 Phase | : 220 / 240 V / 2850 rpm |
| Capacitor | : 45 UF / 450 V |
| Ukuran Pipa | : 1 inch |
| Kapasitas Kerja Pompa | : 2.5 m ³ / jam |

| | |
|-----------|------------------|
| Kedalaman | |
| 121 Meter | : 10 Liter/Menit |
| 100 Meter | : 35 Liter/Menit |
| 31 Meter | : 60 Liter/Menit |

3RYU2.5/11

SUBMERSIBLE PUMP 0.50 HP

POMPA CELUP



JUMLAH
IMPELLER
11

SPESIFIKASI

Daya Pompa : 0.50 hp 0.37 kw 3.0A
 Listrik 1 Phase : 220 / 240 V / 2850 rpm
 Capacitor : 20 UF / 450 V
 Ukuran Pipa : 1 inch
 Kapasitas Kerja Pompa : 2.5 m³ / jam

Kedalaman : 10 Liter/Menit
 43 Meter : 35 Liter/Menit
 35 Meter : 60 Liter/Menit
 11 Meter

SPAREPARTS:



3RYU2.5/16

SUBMERSIBLE PUMP 0.75 HP

POMPA CELUP



JUMLAH
IMPELLER
16

SPESIFIKASI

Daya Pompa : 0.75 hp 0.55 kw 4.2A
 Listrik 1 Phase : 220 / 240 V / 2850 rpm
 Capacitor : 25 UF / 450 V
 Ukuran Pipa : 1 inch
 Kapasitas Kerja Pompa : 2.5 m³ / jam

Kedalaman : 10 Liter/Menit
 62 Meter : 35 Liter/Menit
 51 Meter : 60 Liter/Menit
 16 Meter

SPAREPARTS:



3RYU2.5/21

SUBMERSIBLE PUMP 1 HP

POMPA CELUP



JUMLAH
IMPELLER
21

SPESIFIKASI

Daya Pompa : 1 hp 0.75 kw 5.2A
 Listrik 1 Phase : 220 / 240 V / 2850 rpm
 Capacitor : 35 UF / 450 V
 Ukuran Pipa : 1 inch
 Kapasitas Kerja Pompa : 2.5 m³ / jam

Kedalaman : 10 Liter/Menit
 82 Meter : 35 Liter/Menit
 68 Meter : 60 Liter/Menit
 21 Meter

SPAREPARTS:



RS2512

SUBMERSIBLE PUMP

POMPA CELUP



SPESIFIKASI

| | |
|-----------------------|---------------------|
| Diameter Pipa Keluar | : 25 mm (1 inch) |
| Debit Air | : 70 Liter/Menit |
| Maksimal Tinggi Hisap | : 4 Meter |
| Temperatur Air | : 0-60° C |
| Voltase | : DC 12 Volt |
| Ampere | : 5.4 Ampere |
| Tenaga | : 45 Watt/ 5800 rpm |
| Berat | : 1.3 Kg |



GASOLINE PARTS

GASOLINE PARTS



328



GX210



EM154F



RS1600

AIR CLEANER ASSY.

| CODE | TYPE | ITEM NAME |
|--------|--------------|----------------------------|
| 106845 | 328 | AIR CLEANER ASSY. |
| 106866 | 5200 | AIR CLEANER ASSY. |
| 106060 | EM154F | AIR CLEANER ASSY. |
| 106672 | EM156F | AIR CLEANER ASSY. |
| 106022 | GX160 | AIR CLEANER ASSY. |
| 107183 | GX210 | AIR CLEANER ASSY. |
| 106705 | GX270 | AIR CLEANER ASSY. |
| 106645 | GX390 | AIR CLEANER ASSY. |
| 107641 | GX500 | AIR CLEANER ASSY. |
| 107452 | GX630 | AIR CLEANER ASSY. |
| 107146 | GX160 | AIR CLEANER ASSY. (GENSET) |
| 106085 | GX200/ET2800 | AIR CLEANER ASSY. (GENSET) |
| 106807 | GX420/ET7800 | AIR CLEANER ASSY. (GENSET) |



2KW



6KW

ALTERNATOR SET

| CODE | TYPE | ITEM NAME |
|--------|---------------|-------------------------------|
| 106108 | 1KW | ALTERNATOR SET (ROTOR+STATOR) |
| 106079 | 2KW | ALTERNATOR SET (ROTOR+STATOR) |
| 106091 | 2.5KW | ALTERNATOR SET (ROTOR+STATOR) |
| 106093 | 5KW | ALTERNATOR SET (ROTOR+STATOR) |
| 106123 | 6KW | ALTERNATOR SET (ROTOR+STATOR) |
| 106784 | EM156F/RS1600 | ALTERNATOR SET (ROTOR+STATOR) |
| 106758 | ET950 | ALTERNATOR SET (ROTOR+STATOR) |

ALTERNATOR MOUNTING

(VBR ABSORBER II)



| CODE | TYPE | ITEM NAME |
|--------|------|---------------------------------------|
| 106070 | 1KW | ALTERNATOR MOUNTING (VBR ABSORBER II) |



AVR

| CODE | TYPE | ITEM NAME |
|--------|------|------------------------|
| 106174 | 3KW | AVR (ALUMINIUM)(220UF) |
| 106671 | 3KW | AVR (PLASTIC)(220UF) |
| 106028 | 5KW | AVR |



CAPACITOR

| CODE | TYPE | ITEM NAME |
|--------|-------|----------------------------------|
| 106285 | ET950 | CAPACITOR (BIG BODY)(24UF)(450V) |



CARBON BRUSH ASSY.

| CODE | TYPE | ITEM NAME |
|--------|------|--------------------|
| 106051 | 1KW | CARBON BRUSH ASSY. |



CARBURATOR ASSY.

| CODE | TYPE | ITEM NAME |
|--------|---------|-------------------------------|
| 106847 | 328 | CARBURATOR ASSY. |
| 106113 | EM154F | CARBURATOR ASSY. |
| 106674 | EM156F | CARBURATOR ASSY. |
| 106025 | GX160 | CARBURATOR ASSY. (GENSET) |
| 106605 | GX160 | CARBURATOR ASSY. (WATER PUMP) |
| 106352 | GX270 | CARBURATOR ASSY. |
| 106105 | GX390 | CARBURATOR ASSY. (GENSET) |
| 106353 | GX390 | CARBURATOR ASSY. (WATER PUMP) |
| 106915 | GX460++ | CARBURATOR ASSY. |
| 107635 | GX500 | CARBURATOR ASSY. |
| 107446 | GX630 | CARBURATOR ASSY. |



CHAIN

| CODE | TYPE | ITEM NAME |
|--------|-------|-------------------|
| 105830 | GX200 | CHAIN (LOW SPEED) |
| 107193 | GX210 | CHAIN (LOW SPEED) |



CHAIN COVER

| CODE | TYPE | ITEM NAME |
|--------|-------|-------------------------|
| 105832 | GX200 | CHAIN COVER (LOW SPEED) |



GX200

GX210

CHAIN GEAR

| CODE | TYPE | ITEM NAME |
|--------|-------|---|
| 105831 | GX200 | CHAIN GEAR (BIG AND SMALL) (LOW SPEED) |
| 107194 | GX210 | CHAIN GEAR (BIG AND SMALL) (LOW SPEED) |



CHAIN WHEEL

| | TYPE | |
|--------|------|---------------------|
| 106368 | 5200 | CHAIN WHEEL (3/8-7) |
| 106357 | 5200 | CHAIN WHEEL (325-7) |



CLUTCH DRUM

| CODE | TYPE | ITEM NAME |
|--------|------|-------------|
| 106356 | 5200 | CLUTCH DRUM |



GX460++

CON. ROD ASSY.

| CODE | TYPE | ITEM NAME |
|--------|---------|-----------------------|
| 106675 | EM156F | CON. ROD ASSY. (0.00) |
| 106630 | GX160 | CON. ROD ASSY. (0.00) |
| 106646 | GX390 | CON. ROD ASSY. (0.00) |
| 106919 | GX460++ | CON. ROD ASSY. (0.00) |
| 107639 | GX500 | CON. ROD ASSY. (0.00) |
| 107450 | GX630 | CON. ROD ASSY. (0.00) |



EM154F

COVER, CYL. HEAD

| CODE | TYPE | ITEM NAME |
|--------|--------|------------------|
| 106190 | EM154F | COVER, CYL. HEAD |
| 106685 | GX160 | COVER, CYL. HEAD |
| 106735 | GX390 | COVER, CYL. HEAD |
| 107647 | GX500 | COVER, CYL. HEAD |



GX500

COVER, CRANKCASE

| CODE | TYPE | ITEM NAME |
|--------|---------------|------------------------------|
| 106772 | EM156F/ET1500 | COVER, CRANKCASE |
| 106786 | EM156F/RS1600 | COVER, CRANKCASE |
| 106684 | GX160 | COVER, CRANKCASE |
| 106714 | GX270 | COVER, CRANKCASE |
| 106733 | GX390 | COVER, CRANKCASE |
| 107646 | GX500 | COVER, CRANKCASE |
| 106721 | GX270LS | COVER, CRANKCASE (LOW SPEED) |
| 106738 | GX390LS | COVER, CRANKCASE (LOW SPEED) |
| 105828 | GX200LS | COVER, CRANKCASE (LOW SPEED) |



GX160



GX160 GENSET



GX200 GENSET



GX270



GX390



GX460++



ET950 LEFT

CRANKCASE

| CODE | TYPE | ITEM NAME |
|--------|--------------|--------------------|
| 106114 | GX160 | CRANKCASE (GENSET) |
| 106088 | GX200/ET2800 | CRANKCASE (GENSET) |
| 106106 | GX420/ET7800 | CRANKCASE (GENSET) |
| 106345 | ET950 | CRANKCASE (RIGHT) |
| 106346 | ET950 | CRANKCASE (LEFT) |
| 106849 | 328 | CRANKCASE (RIGHT) |
| 106848 | 328 | CRANKCASE (LEFT) |
| 106869 | 5200 | CRANKCASE (LEFT) |
| 106870 | 5200 | CRANKCASE (RIGHT) |
| 106109 | EM154F | CRANKCASE |
| 106189 | EM156F | CRANKCASE |
| 105833 | GX160 | CRANKCASE |
| 105834 | GX200 | CRANKCASE |
| 107188 | GX210 | CRANKCASE |
| 107165 | GX225 | CRANKCASE |
| 105835 | GX270 | CRANKCASE |
| 105836 | GX390 | CRANKCASE |
| 105837 | GX420 | CRANKCASE |
| 106005 | GX460 | CRANKCASE |
| 106910 | GX460++ | CRANKCASE |
| 107645 | GX500 | CRANKCASE |
| 107456 | GX630 | CRANKCASE |

CRANKSHAFT ASSY.

| CODE | TYPE | ITEM NAME |
|--------|---------|-------------------------------|
| 105838 | GX200 | CRANKSHAFT ASSY. (LOW SPEED) |
| 107192 | GX210 | CRANKSHAFT ASSY. (LOW SPEED) |
| 105839 | GX270 | CRANKSHAFT ASSY. (LOW SPEED) |
| 105840 | GX390 | CRANKSHAFT ASSY. (LOW SPEED) |
| 105841 | GX420 | CRANKSHAFT ASSY. (LOW SPEED) |
| 106912 | GX460++ | CRANKSHAFT ASSY. (LOW SPEED) |
| 106032 | GX160 | CRANKSHAFT ASSY. (WATER PUMP) |
| 106033 | GX390 | CRANKSHAFT ASSY. (WATER PUMP) |
| 106850 | 328 | CRANKSHAFT ASSY. |
| 106676 | EM156F | CRANKSHAFT ASSY. |
| 106683 | GX160 | CRANKSHAFT ASSY. |
| 107190 | GX210 | CRANKSHAFT ASSY. |
| 106707 | GX270 | CRANKSHAFT ASSY. |
| 106728 | GX390 | CRANKSHAFT ASSY. |
| 106911 | GX460++ | CRANKSHAFT ASSY. |
| 107637 | GX500 | CRANKSHAFT ASSY. |
| 107448 | GX630 | CRANKSHAFT ASSY. |



GX200LS



328



GX200 WATER PUMP



GX270LS



GX390 WATER PUMP



GX390LS



GX420LS



5200 2 KEY

DRUM WHEEL

| CODE | TYPE | ITEM NAME |
|--------|-----------|---------------------|
| 106757 | ET950 | DRUM WHEEL |
| 106770 | EM154F | DRUM WHEEL |
| 106207 | 5200 2KEY | DRUM WHEEL (2KEY) |
| 108008 | 5200 | DRUM WHEEL 4KEY BIG |



GX390



GX460++

FAN CASE

| CODE | TYPE | ITEM NAME |
|--------|---------|-----------|
| 106858 | 328 | FAN CASE |
| 106690 | GX160 | FAN CASE |
| 107197 | GX225 | FAN CASE |
| 106716 | GX270 | FAN CASE |
| 106344 | GX390 | FAN CASE |
| 106914 | GX460++ | FAN CASE |
| 107649 | GX500 | FAN CASE |



328

FLYWHEEL

| CODE | TYPE | ITEM NAME |
|--------|--------|-----------------------|
| 106851 | 328 | FLYWHEEL |
| 106206 | 5200 | FLYWHEEL ASSY. (IRON) |
| 106769 | EM154F | FLYWHEEL |
| 106686 | GX160 | FLYWHEEL |
| 106708 | GX270 | FLYWHEEL |
| 106729 | GX390 | FLYWHEEL |



RS1500



FRAME REAR

| CODE | TYPE | ITEM NAME |
|--------|---------------|--------------------|
| 105972 | 1KW | FRAME REAR |
| 106343 | ET950 | FRAME REAR |
| 106774 | EM156F/ET1500 | FRAME REAR (SMALL) |
| 106781 | EM156F/RS1600 | FRAME REAR |
| 106080 | 2KW/ET2800 | FRAME REAR |
| 106094 | 5KW/ET7800 | FRAME REAR |

FUEL HOSE+FILTER



| CODE | TYPE | ITEM NAME |
|--------|------|------------------|
| 106381 | 5200 | FUEL HOSE+FILTER |



GX210

FUEL TANK ASSY.

| CODE | TYPE | ITEM NAME |
|--------|---------------|---------------------------------|
| 106777 | EM156F/ET1500 | FUEL TANK ASSY. (GENSET)(BLACK) |
| 106803 | GX200/ET2800 | FUEL TANK ASSY. (GENSET)(BLACK) |
| 106794 | GX420/ET7800 | FUEL TANK ASSY. (GENSET)(BLACK) |
| 106846 | 328 | FUEL TANK ASSY. |
| 106867 | 5200 | FUEL TANK ASSY. |
| 106747 | ET950 | FUEL TANK ASSY. |
| 106779 | EM156F/RS1600 | FUEL TANK ASSY. |
| 105957 | GX160 | FUEL TANK ASSY. (GREEN) |
| 107191 | GX210 | FUEL TANK ASSY. (GREEN) |
| 105958 | GX270 | FUEL TANK ASSY. (GREEN) |
| 105959 | GX390 | FUEL TANK ASSY. (GREEN) |
| 107644 | GX500 | FUEL TANK ASSY. (GREEN) |
| 107455 | GX630 | FUEL TANK ASSY. (GREEN) |
| 106766 | EM156F/ET1500 | FUEL TANK ASSY. (GENSET)(GREEN) |
| 106788 | GX200/ET2800 | FUEL TANK ASSY. (GENSET)(GREEN) |
| 106805 | GX420/ET7800 | FUEL TANK ASSY. (GENSET)(GREEN) |

GASKET, CYL. HEAD



GX210

GX225

GX460++

RS1500

| CODE | TYPE | ITEM NAME |
|--------|---------|-------------------|
| 106191 | EM156F | GASKET, CYL. HEAD |
| 106631 | GX160 | GASKET, CYL. HEAD |
| 107198 | GX210 | GASKET, CYL. HEAD |
| 107199 | GX225 | GASKET, CYL. HEAD |
| 106647 | GX390 | GASKET, CYL. HEAD |
| 106662 | GX420 | GASKET, CYL. HEAD |
| 106667 | GX460 | GASKET, CYL. HEAD |
| 106913 | GX460++ | GASKET, CYL. HEAD |

GUIDE BAR



| CODE | TYPE | ITEM NAME |
|--------|------|-------------------------------|
| 106187 | 5200 | GUIDE BAR (22")(STEEL ALLOY) |

HEAD, CYL.



EM154F

GX420

| CODE | TYPE | ITEM NAME |
|--------|---------|------------|
| 106110 | EM154F | HEAD, CYL. |
| 107185 | GX210 | HEAD, CYL. |
| 107186 | GX225 | HEAD, CYL. |
| 106709 | GX270 | HEAD, CYL. |
| 106101 | GX390 | HEAD, CYL. |
| 106107 | GX420 | HEAD, CYL. |
| 106918 | GX460++ | HEAD, CYL. |



EM156F

HEAD, CYL. ASSY.

| CODE | TYPE | ITEM NAME |
|--------|---------|------------------|
| 106677 | EM156F | HEAD, CYL. ASSY. |
| 106084 | GX160 | HEAD, CYL. ASSY. |
| 106089 | GX200 | HEAD, CYL. ASSY. |
| 107256 | GX210 | HEAD, CYL. ASSY. |
| 107257 | GX225 | HEAD, CYL. ASSY. |
| 107276 | GX270 | HEAD, CYL. ASSY. |
| 107254 | GX390 | HEAD, CYL. ASSY. |
| 107277 | GX420 | HEAD, CYL. ASSY. |
| 106666 | GX460 | HEAD, CYL. ASSY. |
| 107255 | GX460++ | HEAD, CYL. ASSY. |
| 107640 | GX500 | HEAD, CYL. ASSY. |
| 107451 | GX630 | HEAD, CYL. ASSY. |



HIGH VOLTAGE SET

| CODE | TYPE | ITEM NAME |
|--------|-------|------------------|
| 106929 | ET950 | HIGH VOLTAGE SET |



HOURMETER

| CODE | TYPE | ITEM NAME |
|--------|------|-----------|
| 106071 | 1KW | HOURMETER |



HOUSING IMPELLER

| CODE | TYPE | ITEM NAME |
|--------|---------|------------------------|
| 106007 | WP3INCH | HOUSING IMPELLER (BIG) |



RS20CX

RS30CX

HOUSING PUMP ASSY.

| CODE | TYPE | ITEM NAME |
|--------|---------|---------------------------------|
| 105999 | WP2INCH | HOUSING PUMP ASSY. |
| 106002 | WP3INCH | HOUSING PUMP ASSY. (BIG PUMP) |
| 106741 | WP4INCH | HOUSING PUMP ASSY. |
| 107969 | SNB50 | HOUSING PUMP ASSY. (MODEL SPIH) |
| 107970 | SNB80 | HOUSING PUMP ASSY. (MODEL SPIH) |



IGNITOR

| CODE | TYPE | ITEM NAME |
|--------|-------|-----------|
| 106931 | ET950 | IGNITOR |



IMPELLER FOR WATER PUMP

| CODE | TYPE | ITEM NAME |
|--------|---------|-------------------------------|
| 105895 | WP3INCH | IMPELLER FOR WATER PUMP (BIG) |



GX160



ET950



328

MAGNETO ASSY.

| CODE | TYPE | ITEM NAME |
|--------|--------|---------------|
| 106853 | 328 | MAGNETO ASSY. |
| 106230 | 5200 | MAGNETO ASSY. |
| 106061 | EM154F | MAGNETO ASSY. |
| 106930 | ET950 | MAGNETO ASSY. |
| 106634 | GX160 | MAGNETO ASSY. |
| 106650 | GX390 | MAGNETO ASSY. |



GX210



GX460++



GX225

PISTON ASSY. 0.00 W/ CLIP+PIN+RING

| CODE | TYPE | ITEM NAME |
|--------|---------|------------------------------------|
| 106852 | 328 | PISTON ASSY. 0.00 W/ CLIP+PIN+RING |
| 106871 | 5200 | PISTON ASSY. 0.00 W/ CLIP+PIN+RING |
| 106962 | EM156F | PISTON ASSY. 0.00 W/ CLIP+PIN+RING |
| 106635 | GX160 | PISTON ASSY. 0.00 W/ CLIP+PIN+RING |
| 106644 | GX200 | PISTON ASSY. 0.00 W/ CLIP+PIN+RING |
| 107187 | GX210 | PISTON ASSY. 0.00 W/ CLIP+PIN+RING |
| 107166 | GX225 | PISTON ASSY. 0.00 W/ CLIP+PIN+RING |
| 106652 | GX390 | PISTON ASSY. 0.00 W/ CLIP+PIN+RING |
| 106664 | GX420 | PISTON ASSY. 0.00 W/ CLIP+PIN+RING |
| 106669 | GX460 | PISTON ASSY. 0.00 W/ CLIP+PIN+RING |
| 106893 | GX460++ | PISTON ASSY. 0.00 W/ CLIP+PIN+RING |
| 107642 | GX500 | PISTON ASSY. 0.00 W/ CLIP+PIN+RING |
| 107453 | GX630 | PISTON ASSY. 0.00 W/ CLIP+PIN+RING |



GX160

RECOIL STARTER ASSY.

| CODE | TYPE | ITEM NAME |
|--------|---------|------------------------------------|
| 106855 | 328 | RECOIL STARTER ASSY. |
| 105923 | 5200 | RECOIL STARTER ASSY. (2KEY) |
| 106205 | 5200 | RECOIL STARTER ASSY. (4KEY) |
| 106333 | EM154F | RECOIL STARTER ASSY. (PLASTIC) |
| 106679 | EM156F | RECOIL STARTER ASSY. (IRON) |
| 106021 | GX1604H | RECOIL STARTER ASSY. (4H)(PLASTIK) |
| 106637 | GX1603H | RECOIL STARTER ASSY. (3H)(IRON) |
| 106710 | GX270 | RECOIL STARTER ASSY. (3H)(IRON) |
| 106654 | GX390 | RECOIL STARTER ASSY. (3H)(IRON) |
| 107636 | GX500 | RECOIL STARTER ASSY. (IRON) |
| 107447 | GX630 | RECOIL STARTER ASSY. (IRON) |



328



5200 (2 KEY)



5900 (4 KEY)



ET950



RS1500

ROCKER ARM ASSY.

| CODE | TYPE | ITEM NAME |
|--------|--------|------------------|
| 105971 | EM154F | ROCKER ARM ASSY. |
| 106773 | EM156F | ROCKER ARM ASSY. |
| 106655 | GX390 | ROCKER ARM ASSY. |



GX210



328

SILENCER ASSY.

| CODE | TYPE | ITEM NAME |
|--------|---------------|------------------------|
| 106888 | 328 | SILENCER ASSY. |
| 106889 | 5200 | SILENCER ASSY. |
| 106785 | EM156F/RS1600 | SILENCER ASSY. |
| 106638 | GX160 | SILENCER ASSY. (BLACK) |
| 107184 | GX210 | SILENCER ASSY. (BLACK) |
| 106656 | GX390 | SILENCER ASSY. (BLACK) |
| 107643 | GX500 | SILENCER ASSY. (BLACK) |
| 107454 | GX630 | SILENCER ASSY. (BLACK) |



SPRING, VALVE

| CODE | TYPE | ITEM NAME |
|--------|---------|---------------|
| 106642 | GX160 | SPRING, VALVE |
| 106660 | GX390 | SPRING, VALVE |
| 107498 | GX460++ | SPRING, VALVE |



STARTING, MOTOR

| CODE | TYPE | ITEM NAME |
|--------|------------|-----------------|
| 107103 | 2KW/ET2800 | STARTING, MOTOR |



SWITCH ON/OFF

| CODE | TYPE | ITEM NAME |
|--------|------|--------------------------------------|
| 106854 | 328 | SWITCH, ON/ OFF |
| 106125 | 2KW | SWITCH ON/OFF (ELECTRICAL SWITCH) |

328

2KW

THROTTLE CONTROL ASSY.



GX460++

| CODE | TYPE | ITEM NAME |
|--------|---------|------------------------|
| 106639 | GX160 | THROTTLE CONTROL ASSY. |
| 106711 | GX270 | THROTTLE CONTROL ASSY. |
| 106657 | GX390 | THROTTLE CONTROL ASSY. |
| 106917 | GX460++ | THROTTLE CONTROL ASSY. |
| 107648 | GX500 | THROTTLE CONTROL ASSY. |

VALVE, IN+EX



GX210

GX225

| CODE | TYPE | ITEM NAME |
|--------|---------|----------------------|
| 106640 | GX160 | VALVE, IN+EX (BLACK) |
| 107189 | GX210 | VALVE, IN+EX (BLACK) |
| 107167 | GX225 | VALVE, IN+EX (BLACK) |
| 106712 | GX270 | VALVE, IN+EX (BLACK) |
| 106659 | GX390 | VALVE, IN+EX (BLACK) |
| 107497 | GX460++ | VALVE, IN+EX (BLACK) |

VOLT METER



| CODE | TYPE | ITEM NAME |
|--------|------|------------|
| 105970 | 1KW | VOLT METER |



TEKIRO CORPORATION



DIESEL PARTS

DIESEL PARTS



CAMSHAFT



S195

| CODE | TYPE | ITEM NAME |
|--------|--------|------------------------------|
| 106545 | S195 | CAMSHAFT (BLACK) |
| 106546 | S1110 | CAMSHAFT (BLACK) |
| 106547 | S1115 | CAMSHAFT (W/ CIRCLIP)(BLACK) |
| 106548 | ZS1125 | CAMSHAFT (BLACK) |



S1110



S1115



ZS1125

CON. ROD BEARING



R175



S195

| CODE | TYPE | ITEM NAME |
|--------|--------|-------------------------|
| 106554 | R175 | CON. ROD BEARING (0.00) |
| 106555 | S195 | CON. ROD BEARING (0.00) |
| 106556 | S1110 | CON. ROD BEARING (0.00) |
| 106557 | ZH1115 | CON. ROD BEARING (0.00) |
| 106558 | ZS1125 | CON. ROD BEARING (0.00) |
| 106559 | JD300 | CON. ROD BEARING (0.00) |



S1110



ZH1115



ZS1125



JD300



R175

FUEL INJ. PUMP ASSY.

| CODE | TYPE | ITEM NAME |
|--------|--------|------------------------------|
| 106943 | R100 | FUEL INJ. PUMP ASSY. |
| 106942 | R175 | FUEL INJ. PUMP ASSY. |
| 106944 | S195 | FUEL INJ. PUMP ASSY. |
| 106945 | S1110 | FUEL INJ. PUMP ASSY. |
| 106946 | ZH1115 | FUEL INJ. PUMP ASSY. (9.5MM) |
| 106947 | ZS1130 | FUEL INJ. PUMP ASSY. |



S195



S1110



ZH1115



ZS1130



EM185

FUEL INJECTOR ASSY.

| CODE | TYPE | ITEM NAME |
|--------|--------|---------------------|
| 106991 | R100 | FUEL INJECTOR ASSY. |
| 106992 | R175 | FUEL INJECTOR ASSY. |
| 106993 | S195 | FUEL INJECTOR ASSY. |
| 106994 | S1110 | FUEL INJECTOR ASSY. |
| 106995 | ZS1125 | FUEL INJECTOR ASSY. |



R175



S195



EM185



S1110



ZS1125



GASKET, CYL. HEAD

| CODE | TYPE | ITEM NAME |
|--------|--------|--|
| 106486 | R100 | GASKET, CYL. HEAD (KLINGRIT) ^(NEW TYPE) |
| 106484 | R175A | GASKET, CYL. HEAD (KLINGRIT) |
| 106485 | R180 | GASKET, CYL. HEAD (KLINGRIT) |
| 106487 | S195 | GASKET, CYL. HEAD (KLINGRIT) |
| 106488 | S1100 | GASKET, CYL. HEAD (KLINGRIT) |
| 106489 | S1110 | GASKET, CYL. HEAD (KLINGRIT) |
| 106490 | S1115 | GASKET, CYL. HEAD (KLINGRIT) |
| 106491 | ZH1110 | GASKET, CYL. HEAD (KLINGRIT) |
| 106492 | ZH1115 | GASKET, CYL. HEAD (KLINGRIT) |
| 106493 | ZS1125 | GASKET, CYL. HEAD (KLINGRIT) |
| 106494 | ZS1130 | GASKET, CYL. HEAD (KLINGRIT) |
| 106495 | ZH1125 | GASKET, CYL. HEAD (KLINGRIT) |
| 106496 | JD300 | GASKET, CYL. HEAD (KLINGRIT) |





S195

GEAR, SET

| CODE | TYPE | ITEM NAME |
|--------|--------|-------------------|
| 107593 | S195 | GEAR, SET |
| 107650 | ZH1125 | GEAR, SET |
| 107595 | ZS1125 | GEAR, SET |
| 106291 | S195 | GEAR, SET (BLACK) |
| 106293 | ZH1125 | GEAR, SET (BLACK) |



ZH1125



ZS1125



R175A

LINER, CYL. W/ O'RING

| CODE | TYPE | ITEM NAME |
|--------|--------|----------------------------------|
| 106739 | R175A | LINER, CYL. W/ O'RING |
| 106740 | R180 | LINER, CYL. W/ O'RING |
| 107005 | S195 | LINER, CYL. W/ O'RING |
| 107012 | S1100 | LINER, CYL. (2R, 10MM) W/ O'RING |
| 107006 | S1110 | LINER, CYL. W/ O'RING |
| 107007 | S1115 | LINER, CYL. (135MM) W/ O'RING |
| 107008 | ZH1115 | LINER, CYL. W/ O'RING |
| 107009 | ZH1125 | LINER, CYL. W/ O'RING |
| 107010 | ZS1125 | LINER, CYL. W/ O'RING |
| 107011 | ZS1130 | LINER, CYL. W/ O'RING |



R180



S1115



ZH1115



ZH1125



ZS1125



ZS1130

NOZZLE



JD300



R175



S195



S1110

| CODE | TYPE | ITEM NAME |
|--------|-------|-----------|
| 107069 | R175 | NOZZLE |
| 107070 | S195 | NOZZLE |
| 107071 | S1110 | NOZZLE |
| 107072 | JD300 | NOZZLE |

PIPE, FUEL



S1110

| CODE | TYPE | ITEM NAME |
|--------|--------|-----------------------------|
| 106459 | S1110 | PIPE, FUEL (MODEL S)(BLACK) |
| 106458 | ZH1115 | PIPE, FUEL (MODEL S)(BLACK) |

PIPE, HIGH PRESSURE



ZS1125



R175A



S195



S1110



S1115



ZHS1115

| CODE | TYPE | ITEM NAME |
|--------|--------|---|
| 107306 | R100 | PIPE, HIGH PRESSURE (BLACK)(LUBANG KECIL) |
| 107305 | R175A | PIPE, HIGH PRESSURE (BLACK)(LUBANG KECIL) |
| 107177 | S195 | PIPE, HIGH PRESSURE (BLACK)(LUBANG KECIL) |
| 107178 | S1110 | PIPE, HIGH PRESSURE (BLACK)(LUBANG KECIL) |
| 107179 | S1115 | PIPE, HIGH PRESSURE (BLACK)(LUBANG KECIL) |
| 107180 | ZH1115 | PIPE, HIGH PRESSURE (BLACK)(LUBANG KECIL) |
| 107181 | ZS1125 | PIPE, HIGH PRESSURE (BLACK)(LUBANG KECIL) |
| 107307 | JD300 | PIPE, HIGH PRESSURE (BLACK)(LUBANG KECIL) |



PIPE, LUB. OIL

| CODE | TYPE | ITEM NAME |
|--------|--------|------------------------|
| 106455 | S195 | PIPE, LUB. OIL (BLACK) |
| 106456 | S1110 | PIPE, LUB. OIL (BLACK) |
| 106457 | ZH1115 | PIPE, LUB. OIL (BLACK) |



PIPE, LUB. OIL ASSY.

| CODE | TYPE | ITEM NAME |
|--------|--------|------------------------------|
| 106926 | S195 | PIPE, LUB. OIL ASSY. (BLACK) |
| 106927 | S1110 | PIPE, LUB. OIL ASSY. (BLACK) |
| 106928 | ZH1115 | PIPE, LUB. OIL ASSY. (BLACK) |



PIPE, OVER FLOW

| CODE | TYPE | ITEM NAME |
|--------|-------|-------------------------|
| 106460 | S195 | PIPE, OVER FLOW (BLACK) |
| 106461 | S1110 | PIPE, OVER FLOW (BLACK) |



S1110 4R

PISTON W/ CIRCLIP

| CODE | TYPE | ITEM NAME |
|--------|--------|-----------------------------------|
| 107046 | R100 | PISTON W/ CIRCLIP (NEW TYPE)(4R) |
| 107047 | R100 | PISTON W/ CIRCLIP (DI)(4R) |
| 107042 | R175 | PISTON W/ CIRCLIP (4R) |
| 107043 | R175A | PISTON W/ CIRCLIP (NEW MODEL)(4R) |
| 107044 | R180 | PISTON W/ CIRCLIP (SWAN)(4R) |
| 107045 | R180 | PISTON W/ CIRCLIP (Q)(4R) |
| 107048 | S195 | PISTON W/ CIRCLIP (4R) |
| 107049 | S195 | PISTON W/ CIRCLIP (DI)(4R) |
| 107050 | S1100 | PISTON W/ CIRCLIP (4R) |
| 107051 | S1100 | PISTON W/ CIRCLIP (DI)(4R) |
| 107142 | S1110 | PISTON W/ CIRCLIP (4R) |
| 107143 | S1115 | PISTON W/ CIRCLIP (4R)(47MM) |
| 107144 | ZH1115 | PISTON W/ CIRCLIP (3R)(45MM) |
| 107052 | ZS1115 | PISTON W/ CIRCLIP (3R)(45MM) |
| 107145 | ZS1115 | PISTON W/ CIRCLIP (3R)(47MM) |
| 107053 | ZH1125 | PISTON W/ CIRCLIP (4R) |
| 107054 | ZS1125 | PISTON W/ CIRCLIP (4R) |
| 107056 | JD300 | PISTON W/ CIRCLIP (4R) |



S1115 (4R)(47MM)



ZH1115 (3R)(45MM)



ZS1115 (3R)(47MM)

PISTON RING SET



| CODE | TYPE | ITEM NAME |
|--------|--------|----------------------|
| 107059 | R100 | PISTON RING SET (4R) |
| 107057 | R175 | PISTON RING SET (4R) |
| 107058 | R180 | PISTON RING SET (4R) |
| 107060 | S195 | PISTON RING SET (4R) |
| 107061 | S1100 | PISTON RING SET (4R) |
| 107062 | S1110 | PISTON RING SET (4R) |
| 107063 | S1115 | PISTON RING SET (4R) |
| 107064 | ZH1115 | PISTON RING SET (3R) |
| 107065 | ZS1115 | PISTON RING SET (3R) |
| 107066 | ZS1125 | PISTON RING SET (4R) |
| 107067 | ZS1130 | PISTON RING SET (4R) |
| 107068 | JD300 | PISTON RING SET (4R) |

EM185 4R

JD300 4R



R175 4R



R180 4R



S195 4R



S1100 4R



S1110 4R



S1115 4R



ZS1115 3R



ZS1115 3R



ZS1125 4R



ZS1130 4R

PLUNGER

| CODE | TYPE | ITEM NAME |
|--------|--------|--------------------------|
| 107073 | R175 | PLUNGER |
| 107074 | S195 | PLUNGER (TONGKAT)(8.5MM) |
| 107075 | S1110 | PLUNGER (9.5MM) |
| 107076 | ZS1125 | PLUNGER |
| 107077 | JD300 | PLUNGER |



R175



S195 8,5MM



S1110 9,5MM



TAPPET

| CODE | TYPE | ITEM NAME |
|--------|------|-----------|
| 106268 | S195 | TAPPET |



S195

S1110

VALVE, IN+EX

| CODE | TYPE | ITEM NAME |
|--------|--------|--------------|
| 106396 | S195 | VALVE, IN+EX |
| 106397 | S1110 | VALVE, IN+EX |
| 106398 | S1115 | VALVE, IN+EX |
| 106399 | ZH1115 | VALVE, IN+EX |
| 106401 | ZH1125 | VALVE, IN+EX |
| 106400 | ZS1125 | VALVE, IN+EX |



S1115



ZH1115



ZH1125



ZS1125



BEARING

BEARING



6000



6000ZZ



6001



6004



6009



6200



6201



6202



6203



6203-2RS



6204



6205



6207



6209



6210



6300



6301



6304



6305



6306



6306ZZ



6310



6314

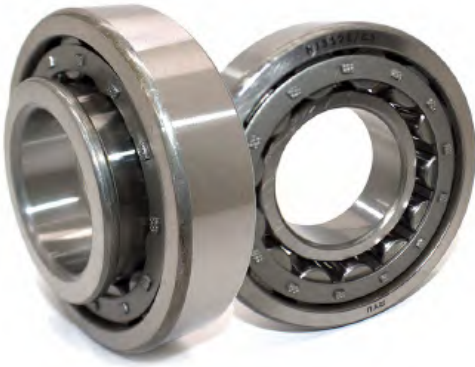


6315

BEARING

| CODE | TYPE | ITEM NAME | CODE | TYPE | ITEM NAME |
|--------|----------|----------------|--------|---------|-----------|
| 106935 | 6000 | BEARING | 107248 | 6207 | BEARING |
| 106936 | 6000ZZ | BEARING | 107243 | 6209 | BEARING |
| 107258 | 6001 | BEARING | 107244 | 6210 | BEARING |
| 106937 | 6004 | BEARING | 107245 | 6300 | BEARING |
| 107259 | 6009 | BEARING | 107246 | 6301 | BEARING |
| 107260 | 6010 | BEARING | 107263 | 6304 | BEARING |
| 106938 | 6200 | BEARING | 107031 | 6305 | BEARING |
| 106939 | 6201 | BEARING | 107250 | 6306 | BEARING |
| 107239 | 6201ZZ | BEARING | 107264 | 6306ZZ | BEARING |
| 107240 | 6202 | BEARING | 107265 | 6309 | BEARING |
| 107241 | 6203 | BEARING | 107247 | 6310 | BEARING |
| 107261 | 6203-2RS | BEARING | 107032 | 6314 | BEARING |
| 107318 | 6203-2RS | BEARING W/ PIN | 107033 | 6315 | BEARING |
| 107262 | 6204 | BEARING | 107266 | 607-2RS | BEARING |
| 107030 | 6205 | BEARING | 107267 | 608-2RS | BEARING |
| 107242 | 6205ZZ | BEARING | 107268 | 627-2RS | BEARING |
| 107665 | 6206 | BEARING | 107269 | 629-2RS | BEARING |

ROLLER BEARING



312

| CODE | TYPE | ITEM NAME |
|--------|-------|----------------|
| 107270 | NF209 | ROLLER BEARING |
| 107271 | NF210 | ROLLER BEARING |
| 107034 | 312 | ROLLER BEARING |
| 107035 | 313 | ROLLER BEARING |



313



NF209



NF210

PILLOW BLOCK



UCP208-24

| CODE | TYPE | ITEM NAME |
|--------|-----------|--------------|
| 107038 | UCP208-24 | PILLOW BLOCK |
| 107036 | UCP204-12 | PILLOW BLOCK |
| 107037 | UCP205-16 | PILLOW BLOCK |
| 107391 | UCP211-32 | PILLOW BLOCK |

APLIKASI PENGGUNAAN BEARING PADA MESIN

A. PENGGUNAAN BEARING PADA MESIN DIESEL ENGINE

| NO | TYPE ENGINE | NAMA SPARE PART | NOMER/ TIPE BEARING |
|----|--------------------------------|-----------------------------|---------------------|
| 1 | R175A | CRANKSHAFT ASSY. FRONT | NF209 |
| | | CRANKSHAFT ASSY. REAR | 6310 |
| | | CAMSHAFT FRONT | 6205 |
| 2 | R180 | CRANKSHAFT ASSY. FRONT | NF210 |
| | | CRANKSHAFT ASSY. REAR | 6310 |
| | | CAMSHAFT FRONT | 6205 |
| 3 | EM185/R100, R190, R192 | CRANKSHAFT ASSY. FRONT | NF211 |
| | | CRANKSHAFT ASSY. REAR | 6311 |
| | | CAMSHAFT FRONT | 6006 |
| | | SHAFT BALANCING FRONT | 6205 |
| 4 | ZS195, ZS1100 BEARING TYPE | CRANKSHAFT ASSY. FRONT | NJ214 |
| | | CRANKSHAFT ASSY. REAR | 6314 |
| | | SHAFT BALANCING 4 PCS | 6205 |
| 5 | ZS195, ZS1100 | CRANKSHAFT ASSY. FRONT | MAIN BEARING |
| | | CRANKSHAFT ASSY. REAR | MAIN BEARING |
| | | SHAFT BALANCING 4 PCS | 6205 |
| 6 | ZS1110, ZS1115 | CRANKSHAFT ASSY. FRONT | NJ312 |
| | | CRANKSHAFT ASSY. REAR | 6314 |
| | | SHAFT BALANCING 4 PCS | 6305 |
| 7 | ZH1110, ZH1115, ZH1125, ZH1130 | CRANKSHAFT ASSY. FRONT | NJ314 |
| | | CRANKSHAFT ASSY. REAR | 6314 |
| | | SHAFT BALANCING 4 PCS | 6306 |
| 8 | ZS1125, ZS1130, ZS1135 | CRANKSHAFT ASSY. FRONT | NJ313 |
| | | CRANKSHAFT ASSY. REAR | 6315 |
| | | SHAFT BALANCING 4 PCS | 6305 |
| 9 | JD300, JD330 | CRANKSHAFT ASSY. FRONT | NJ314 |
| | | CRANKSHAFT ASSY. REAR | 6315 |
| | | SHAFT BALANCING FRONT 2 PCS | 6211 |
| | | SHAFT BALANCING REAR 2 PCS | 6207 |
| | | CAMSHAFT FRONT | 6305 |
| | | CAMSHAFT REAR | 6207 |

B. PENGGUNAAN BEARING PADA MESIN GASOLINE ENGINE & MESIN GASOLINE WATER PUMP

| NO | TYPE ENGINE | NAMA SPARE PART | NOMER/ TIPE BEARING |
|----|--|-------------------------------|---------------------|
| 1 | 200LS, 210LS, 225LS | CRANKSHAFT ASSY. FRONT & REAR | 6205 |
| | | NEEDLE BEARING CHAIN GEAR | 2016 |
| | | OUTPUT SHAFT LOW SPEED | 6205 |
| 2 | 160, 200, 210, 225, WP20CX, WP30SS, WP30CX | CRANKSHAFT ASSY. FRONT & REAR | 6205 |
| 3 | 270 | CRANKSHAFT ASSY. FRONT & REAR | 6206 |
| 4 | 270LS | CRANKSHAFT ASSY. FRONT & REAR | 6206 |
| | | INPUT SHAFT LOW SPEED | 6204 |
| | | OUTPUT SHAFT LOW SPEED | 6206 |
| | | GEAR TIMING LOW SPEED FOR IN | 6302 |
| | | GEAR TIMING LOW SPEED FOR OUT | 6302 |
| 5 | 390, 420, 460++, WP40CX | CRANKSHAFT ASSY. FRONT & REAR | 6207 |
| | | BALANCING SHAFT FRONT & REAR | 6202 |
| 6 | 390LS, 420LS, 460LS++ | CRANKSHAFT ASSY. FRONT & REAR | 6207 |
| | | INPUT SHAFT LOW SPEED | 6204 |
| | | OUTPUT SHAFT LOW SPEED | 6206 |
| | | GEAR TIMING LOW SPEED FOR IN | 6202 |
| | | GEAR TIMING LOW SPEED FOR OUT | 6202 |
| | | BALANCING SHAFT FRONT & REAR | 6202 |

C. PENGGUNAAN BEARING PADA MESIN GENERATOR SET

| NO | TYPE ENGINE | NAMA SPARE PART | NOMER/ TIPE BEARING |
|----|-------------|-------------------------------|---------------------|
| 1 | ET950/1300 | CRANKSHAFT ASSY. FRONT & REAR | 6004 |
| | | ALTERNATOR SET | 6203RS |
| 2 | 1500/1600 | CRANKSHAFT ASSY. FRONT & REAR | 6203 |
| | | ALTERNATOR SET | 6202RS |
| 4 | 2800/3800 | CRANKSHAFT ASSY. FRONT & REAR | 6205 |
| | | ALTERNATOR SET | 6202RS |
| 5 | 7800/8800 | CRANKSHAFT ASSY. FRONT & REAR | 6207 |
| | | BALANCING SHAFT FRONT & REAR | 6202 |
| | | ALTERNATOR SET | 6204RS |

D. PENGGUNAAN BEARING PADA UNIT LAINNYA

| NO | TYPE ENGINE | NAMA SPARE PART | NOMER/ TIPE BEARING |
|----|----------------|-------------------------------|---------------------|
| 1 | RS22 | CRANKSHAFT ASSY. FRONT & REAR | 6204 |
| 2 | RS30 | CRANKSHAFT ASSY. FRONT & REAR | 6205 |
| 3 | RS398 | CRANKSHAFT ASSY. FRONT & REAR | 6002 |
| 4 | RS5900 | CRANKSHAFT ASSY. FRONT & REAR | 6202 |
| 5 | WP10CX/RS769 | CRANKSHAFT ASSY. FRONT & REAR | 6001 |
| 6 | 3RYU2.5/ 3RYU3 | SHAFT MOTOR | 6202 |